



REGISTER

**MANAGE YOUR DATA.
ANYTIME. ANYWHERE.**



// IWO SOFTWARE

Our core competence is the development of software products to digitally manage your geodata and technical information. The reGISter portal simplifies your company's data management procedures and has many theme-based functions to improve communications and processing. Visualisation of your data in different map types gives you the perfect overview and enhances understanding of the information.



ONE CENTRAL STORAGE LOCATION WITH WORLDWIDE ACCESS

Our web-based system means you and your personnel gain quick access to data via a standard web browser. Data storage and server setup takes place within your IT infrastructure to prevent unauthorised access by third parties. An alternative system using a secure server in the reGISter Cloud is also available. Our servers are operated in a German data centre certified according to the ISO 27001 security standard. The system supports a multitude of languages to facilitate easy operation by personnel in other countries.



LINKED MAP VISUALISATION

A core feature of our software is the visualisation of your geodata and maps in the central Map Observer system. Information from a database is linked directly to the relevant graphics in a map enabling visualisation in a spatial context.



OPTIONS FOR CUSTOMISATION

We never stop expanding and developing our applications. Whether this concerns a minor upgrade or the development of a new application module, we enable you to customise the product to your specific requirements and to integrate it optimally into your specific work flows. We work with you to develop the ideal software solution for your needs and support you with implementation from the initial plan through to live operation.

- // IWO Software / 03
- // reGISter / 05
- // MAP OBSERVER / 06
- // reGISter PORTAL / 08
- // reGISter LITE / 09
- // reGISter UNIVERSE / 10
- // LAND MANAGEMENT / 12
- // ADVANCED LAND MANAGEMENT / 14
- // APPLICATIONS & MODULES / 17
- // SERVICE & SUPPORT / 18



// reGISter – YOUR SMART PERSONALISED GEOPORTAL

reGISter is a smart web-based system for centrally managing your data

The portal can be accessed by you and your staff anytime and anywhere via a standard web browser. You can input data, import information from data sources, and link it and make it accessible as required. Specialised information is then easy to combine and evaluate. The reGISter portal is modular. This makes it simple to add extra applications which we will be happy to tailor together to meet your specific needs.

THE BENEFITS:



MANAGED VIEWING & COMMUNICATIONS

reGISter connects staff, management, architects and technicians. The ability to gain a full overview of site-related information ensures optimum understanding, especially by utilising the integrated communication options. You can create access rights and project groups for each location and technical department and focus on particular specialist areas. With the appropriate rights, any staff member can view the latest maps, data and projects via the platform. Data and functions that have not been authorised remain hidden.



MERGEABLE MAP VISUALISATION

For map viewing, the portal enables public and official data sources to be merged with your own private, in-house geodata. As part of the European INSPIRE initiative, specific geodata is freely available in all German Länder and can be directly integrated into reGISter, for example, via the WMS protocol.



SHOWING INTERRELATIONS

Ongoing situations and geographical conditions are portrayed according to your requirements. Your own data is visualised in separate layers within a master map according to the subject areas you specify. The merging of data from different specialised areas then enables easy visual analysis and evaluation.



// MAP OBSERVER

Map Observer provides visualisations of all content. It links directly to your database's alphanumeric information and is connected to external data sources. It can therefore be used for a variety of tasks such as identifying spatial interrelations and displaying overviews. This makes Map Observer a powerful application that is quick and intuitive to use.

MAPS AND LAYERS

All stored and connected visual information and data converge in Map Observer and can be displayed as a map. Maps and layers can be activated individually and visualised accordingly in the map area. You can also use the Layer Manager to set the order and extent of the displayed layers.

DRAWINGS AND NOTES

Add notes to your maps and draw markings and sketches using point, line and area tools. Drawings and notes can be managed according to topic and location and over multiple layers. A share function enables the sharing of notes. Each note level can be individually approved for selected users for viewing (read-only) or for usage (read and write).

MEASURING

The maps have a range of functions for measuring lengths, areas and individual coordinate points. These are useful tools to assess a situation displayed on a map. Different coordinate systems and local projections can also be used and merged, with options to switch between them. This gives you the optimal overview.

INTERACTIVE OBJECTS

Geometric objects stored in the reGISter, such as land parcel boundaries and leasehold areas, can be selected interactively in Map Observer. An information window displays an overview of core information such as land parcel number, area size and land owners.

3D OBSERVER (OPTIONAL)

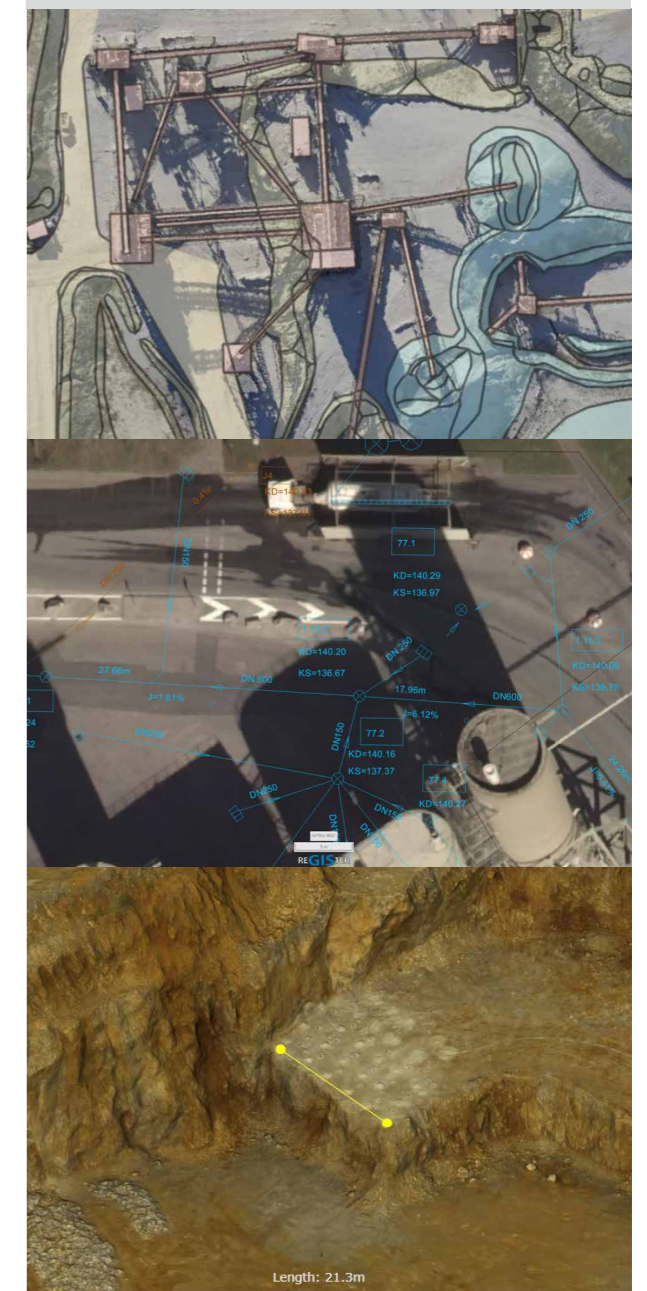
The 3D Observer displays 3D models with texturing and/or aerial images. Detailed spatial interrelations can then be viewed as a rotatable and scalable model, with options such as measuring distances within the area.

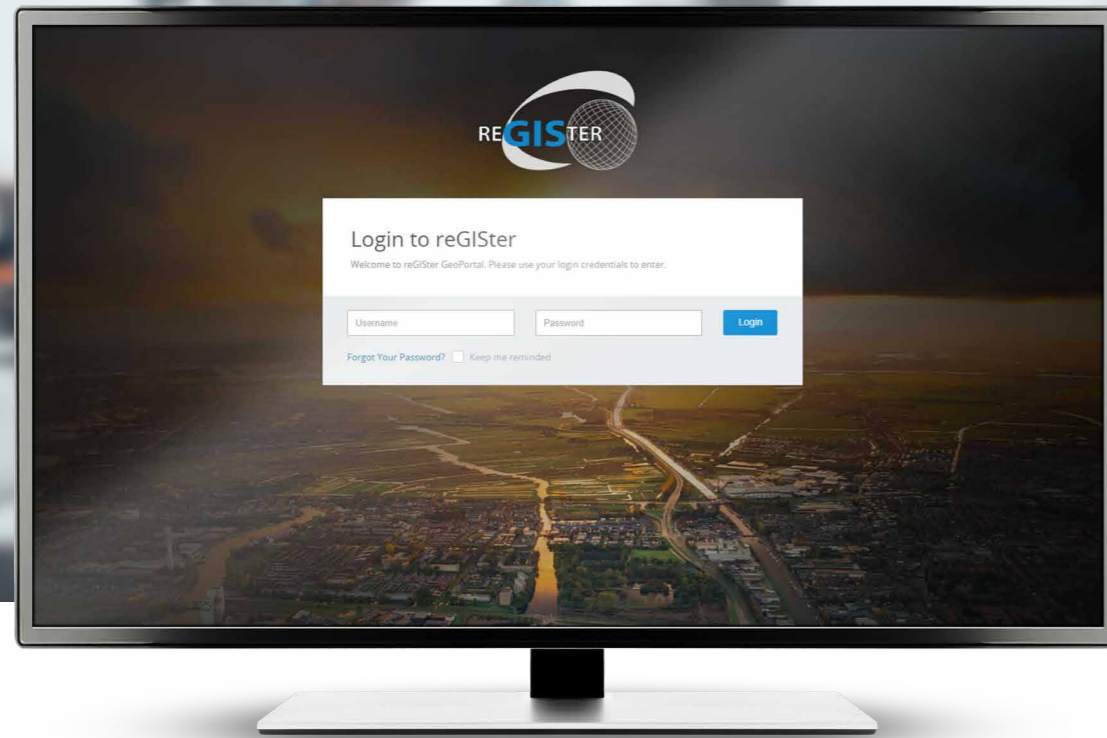
PICTURE MODULE (OPTIONAL)

The Picture Module enables you to link photos and images to the Map Observer, label them and position them using the coordinates contained in a GPS tag, or manually save them at any position. Saved images are displayed as thumbnails on the map and listed and searchable as a table via reGISter's alphanumeric data.

MORE FEATURES IN MAP OBSERVER:

- **Flexible user-based recording of map settings,** such as active layers, sequence and transparency
- **Import/export of geometrics/geodata**
- **Print functions for displayed maps**
- **Links to external data sources**
- **Downloads of original files**





// reGISTer PORTAL

The portal contains all core functions and is the basis for other applications.

USER MANAGEMENT

User Management is for managing user and group rights and access. For example, access to private data can be restricted to specific users. When required, access can be flexibly managed according to specific functions and data.

DOCUMENT MANAGEMENT

The Document Management module stores information and documents such as contracts, construction applications and approvals, and links databases with documents and participating organisations. Any file format such as PDFs, Office documents, image files and data from other specialised software

can be included. These are stored centrally on the server on which reGISTer is installed which also functions as a document archive. You get full access to your files and can download them at any time.

SITE MANAGEMENT

Site Management enables you to manage sites such as plant facilities, and mining and extraction areas. You can also incorporate special icons into maps as well as store master data and site-related documentation. Users with the relevant rights then gain differentiated access to site-related content.

NOTIFICATIONS

The notifications function enables you to send messages and reminders within the portal to the relevant users and user groups. For example, participating groups can be informed about new data records or the expiry of deadlines. Such notifications can also be sent as emails.

GLOBAL DATA

The global data area is used to manage all relevant master data. Data from companies and clients can be setup and assigned information. System data from land registries and other data can also be managed here. Easy searching and filtering are possible using the created contact groups and a global address book.

// reGISTer LITE

reGISTer LITE offers a compact version of our product as an introductory system to digital map management.

reGISTer LITE focuses on Map Observer visualisation of the geodata and maps entered via the portal. Detailed alphanumeric data and applications, such as Land Management, are not included, but can be added as required. Depending on the package purchased, you can add the number of users and locations you require. Worldwide availability, fast access, extremely high security standards, and encrypted data transfer make reGISTer

LITE ideal for sharing information between companies and external partners and public agencies. A monthly subscription gives you all the benefits of the reGISTer Cloud server as well as the latest updates and new functions.



Parcels

Parcel Documents

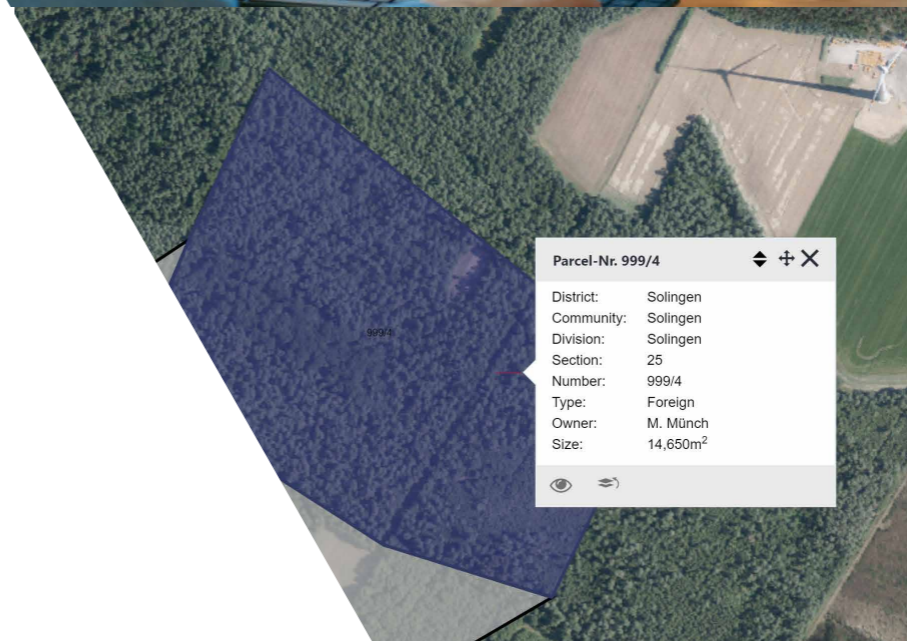
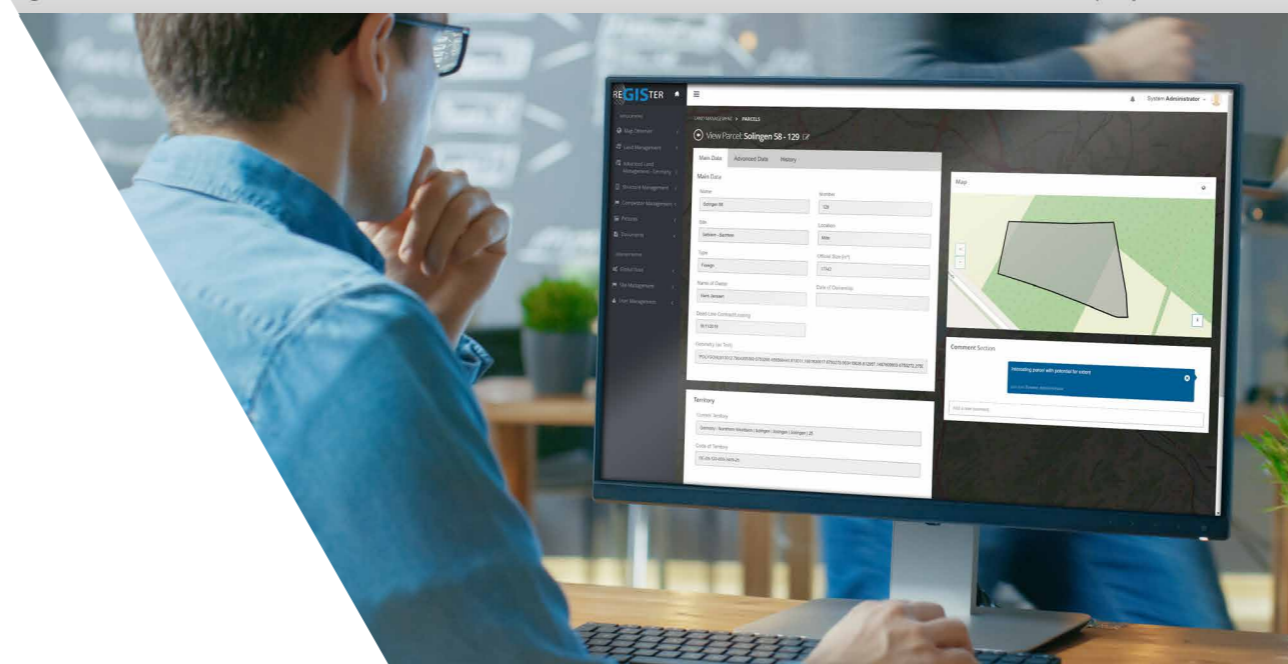
COUNTRY ▲ ₁	SITE NAME ▲ ₂	NAME	NUMBER ▲ ₃	TYPE	SIZE	OWNER NAME	LOCATION
France	Aérodrome de Chambley	Chambley aéroport 004	4	Owned	618.0 m ²	Company INC.	Chambley aéroport
France	Aérodrome de Chambley	Chambley aéroport 027	27	Owned	695.0 m ²	Company INC.	Chambley aéroport
France	Aérodrome de Chambley	Chambley aéroport 047	47	Owned	986.0 m ²	Company INC.	Chambley aéroport
France	Aérodrome de Chambley	Chambley aéroport 053	53	Owned	639.0 m ²	Company INC.	Chambley aéroport
France	Aérodrome de Chambley	Chambley aéroport 083	83	Surface leased	536.0 m ²	Ville de Chambley	Chambley aéroport
France	Aérodrome de Chambley	Chambley aéroport 085	85	Surface leased	938.0 m ²	Ville de Chambley	Chambley aéroport
France	Aérodrome de Chambley	Chambley aéroport 108	108	Foreign	853.0 m ²	Aérodrome de Chambley	Chambley aéroport
Germany	Sandgrube - Bachtem	Solingen 59	125	Foreign	547.0 m ²	Mathias Müller	Mitte
Germany	Sandgrube - Bachtem	Solingen 57	546	Owned	793.0 m ²	Company INC.	Mitte
		Solingen 38	917	Owned	991.0 m ²	Company INC.	

// LAND MANAGEMENT

Overview and management of your sites



Land Management enables you to input graphical and alphanumeric information about the parcels of land, structure the data, and organise associated core information. Data such as land registry reference, municipality, parcel number, land owner, current occupier and area is input using the relevant fields and easily accessed and filtered using navigation functions. Geometrics for each land record are displayed and can be combined into a

detailed map with other topics and map layers via Map Observer. Instant switching between the data and map is possible. Any document and file can also be attached. An overview table means you always have control over the latest data and can easily create outputs and reports. Whether owned land, leased or third-party land, Land Management stores all master data and continuously tracks your current land information.



MORE FEATURES IN LAND MANAGEMENT:

- **Any land type**
owned, third-party property, leased etc.
- **Quick and easy search and filter options in table format**
- **Export and easy evaluation**
via filters as CSV and PDF formats directly from the table overview
- **Links land to locations**
- **Ability to input notes and comments as well as links to documentation**
- **Includes DE and EN language packs**
(other languages can be optionally included)

Sheet	Inventory	Department I	Department II	Department III						
DISTRICT ▲ ₁	LOCAL COURT ▼	COMMUNITY ▼	BOOK OF ▼	NUMBER ▼ ₂	TYPE ▼	OWNER ▼				
Please choose...	Please choose...	Please choose...	Please choose...	Please choi	Please choose...	Please choose...				
Hamel-Pyrmont	Hamel-Pyrmont	Coppenbrügge	5	6	Grundbuch	Janssen				
Recklinghausen	Solingen-Ohligs	Datteln	Ohligs	2	Grundbuch	Janssen				
Recklinghausen	Solingen	Datteln	Datteln	3	Grundbuch	Janssen				
Recklinghausen	Solingen-Wald	Datteln	Ahsen	4	Grundbuch	Janssen, MoneyBank				
Recklinghausen	Solingen-Wald	Datteln	Ahsen	5	Grundbuch	Money Bank				
Recklinghausen	Solingen-Ohligs	Datteln	Ohligs	6	Grundbuch	Bauer				
Recklinghausen	Solingen-Ohligs	Datteln	Ohligs	7	Grundbuch	Janssen				
Recklinghausen	Solingen	Datteln	Datteln	8	Grundbuch	Bauer				
Recklinghausen	Solingen	Datteln	Datteln	9	Grundbuch	Money Bank				

// ADVANCED LAND MANAGEMENT

Country-specific for Germany, USA, Belgium and Poland

ADVANCED LAND MANAGEMENT

Advanced Land Management allows you to manage land with additional information and to create different types of usage per land area. Different usage types can be given their own corresponding geometrics and visualised in a separate layer in Map Observer. In addition to land registry information, you can also manage access rights to land data such as your rights to third-party land or the rights of third parties to your land.

HISTORY

Data is protected from permanent deletion by a history function. Archived data then remains accessible. For example, the historical timeline of each parcel of land can be clearly displayed in tree format. By entering a date, you get the data as it was at the selected time.

CHANGE NOTIFICATION

Any changes within predefined processes are stored and documented. Sales and partitioning can then be traced at any time.

CONTRACTS

This area is used to create and manage contracts, such as tenancy, lease and service agreements. Core contract data such as contract partners, contract terms, leasehold land and other land as well as documentation can be directly linked and edited. A memory

function helps you to keep track of dates and deadlines. You can add reminders to data records and receive reGISter notifications also by email prior to the expiry of a deadline.



// APPLICATIONS & MODULES

A range of other applications and add-ons

STRUCTURE / ASSET MANAGEMENT

Structure Management enables you to store and manage any type of structure, construction or facility building. Depending on the data type, inspections and other test reports can be stored and provided with corresponding information and documentation.

COMPETITOR MANAGEMENT

Competitor Management functions similarly to Site Management but focuses on your competitors. You can enter competitor information and the relevant locations. Individual icons can also be assigned here for visualisation in Map Observer. You can benefit from comment and document functions and, of course, set user-based access restrictions.

SENSOR MONITORING

Any sensor can be created in the Sensor Monitoring application and grouped by type. The measurement data acquired can be imported or manually input. Interfaces for the live streaming of sensor data are also available. There are also options to save reports and documentation. Sensor data can be visualised as points or geometrics in Map Observer. You can then evaluate the data using a variety of graph types. Time and data intervals can be selected as required.

DRILLHOLE MANAGEMENT

Drillhole Management stores information such as standard drill-hole data and positioning as well as images and drawings of individual drill cores. Chemical analyses of drill cores can be imported and divided into specific zones for further analysis. Interfaces to other software such as Surpac are also possible.

INTERFACES

Information, such as alphanumeric data, can be exported directly from predefined and filtered overview tables. Import and export interfaces can be added as required.

AVAILABLE FORMATS:

EXPORT

PDF

CSV / Text

Geometrics (Map Observer)
wkt, kml, geojson, shape

IMPORT

Excel (xls/xlsx)

CSV / Text

Geometrics (Map Observer)
wkt, kml, geojson, shape (also with
.dfb file attributes)



// SERVICE & SUPPORT

INSTALLATION

Installation on your server within your own IT infrastructure can be performed on site or remotely. Consultancy services on hardware and operating system requirements are of course available. Systems can be individually adapted to your internal IT strategies. Installation and operation on a secure reGIS-ter Cloud server is also possible. The server is scaled according to your requirements to give you optimal performance and availability.

TRAINING

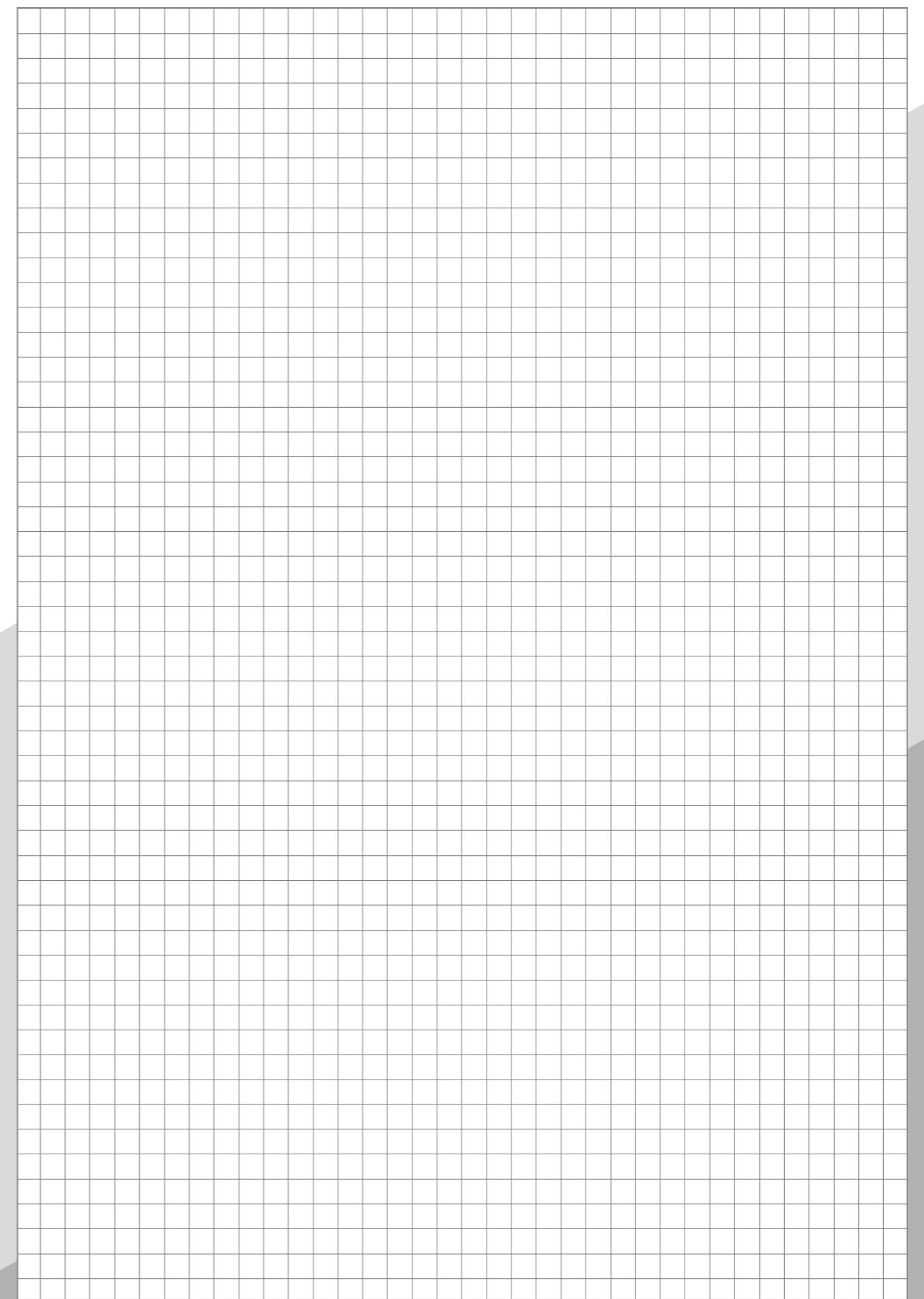
We offer a range of training packages for beginners, advanced users and administrators. We hold training courses for groups of up to ten participants. The courses take into account participant know-how and specific requirements and can be held at your premises, our premises, third-party training rooms, as webinars or video courses. Individually adapted courses according to subject area are also possible.

SUPPORT

Contact one of our developers or your personal project manager directly if you have support inquiries. In addition to a web-based ticket system and email support, we also offer a telephone hotline service.

MAINTENANCE & SUBSCRIPTION

We offer technical and software maintenance which also covers the directly connected software components, such as databases and software libraries, on your company server. We provide optimal technical integration and support. Subscription services ensure you get the latest software updates. New functions are integrated as well as technical software upgrades when changes to the environment occur, such as new browser versions or updated operating systems. Depending on the Service Level Agreement (SLA) purchased, individual upgrades such as new data fields are included in addition to more comprehensive services.





IWO Vermessungstechnik GmbH
Nußbaumstraße 78 a
42699 Solingen, Germany
Tel.: +49 212 250 851 - 0
Fax: +49 212 250 851 - 17
info@iwo-group.com
www.iwo-group.com

